



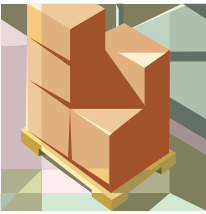
# Discovery Tree (DT) Monthly March 2006

## Director's Corner

Dear DT Families,

### WHAT ARE ALL THOSE BOXES?

For the inquiring parents that have been asking, the large boxes in the front are umbrellas for the yard. We are in the considering differ-



ent types of shade cover for the play yard. If you have any suggestions, please feel free to let me know. Some of the things we need to take into account are that the cover needs to look aesthetically appropriate and be easy for the teachers to put up and take down if the weather is bad.

### THANK YOU

I would like to thank all of the parents that took the time to recognize the excellence in our teachers and our program for the Provider of the Year Award. As you may know, two years ago our school was nominated and won. Because of your recommendations, two teachers and the school were

nominated this year! Thank you so much for showing us your support. On behalf of

the teachers and myself — thank you!



### INDIVIDUAL & CLASS PICTURES

Picture day will be on Tuesday and Wednesday March 7th & 8th. We will be taking pictures of the infants/toddlers on the 7th and of the pre-schoolers on the 8th. Class pictures will also be available for each group. There will be two different themes (see the flyers on the sign-in counter). The photographer would like a parent to help each day. This



is a great time to get some parent participation so if you are interested in helping out,

please give me a call and we can set up a time. Pictures will be starting at 10:00 a.m. and end at 12 p.m.

### TEACHER IN-SERVICE DAY

Just a heads up that Discovery Tree will be having there annual teacher in-service day on Friday April 7th. This means that the school will be closed that day so that your teachers may learn more new and exciting teaching techniques. We will be covering topics such as positive discipline, toddler development and food safety.



### LEARNING OR PLAYING?

This month's discovery into Discovery Tree's philosophy of "learning through play," takes us to the Gardening Program.

Children are natural gardeners. They are curious, like to learn by doing, and love to play in dirt. By working in a garden a child can experience the satisfaction that comes from caring for something over time and observe the cycle of life. They get a chance to dig in the dirt, and to explore its texture. They get a chance to care for what they grow and when it is time they are able to eat the great the produce that they have made. It gives the children, a. chance to get in touch with nature and to explore the growth of plants.



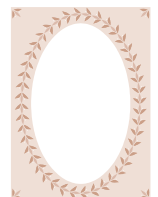
~Becca

## Important Dates:

Tuition Due	1st
Share Days	1st, 8th, 15th 22nd & 29th
Kid Ease Board Mtg.	9th 11:30 a.m.
Tuition is Late	10th
Gymnastics	13th & 27th
Piano Man	17th
Wear Brown to School Day	24th
School Closed (Cesar Chavez Day)	31st

## Learning Themes

The shape of the month is an oval.



The color of the month is brown.

## Our learning themes for the month are:

- ☺ Ecology;
- ☺ Bugs and Insects; and
- ☺ Gardening.

## Preschool News

### LEARNING THEMES

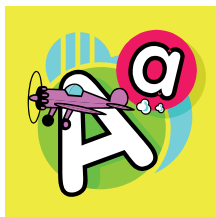
This month the theme is *ecology, bugs & insects*, and *gardening*. The color of the month is *brown* and the shape of the month is *oval*.

The teachers will be working on scheduling some field trips to Capital nursery. As soon as dates are arranged, we will let you know.

If you would like to help in the planting of our garden, feel free to bring some seeds.

### TOOTH FAIRY

We also are expecting the tooth fairy to come and visit us. She was supposed to come in February but was unable to schedule a time that would work for us. I have expressed that Wednesday or Thursday works best for us. So as soon as



we know, we will share the information.

### LETTER LEARNING

We will also be covering the following letters this month S A F E.

## Infant and Toddler News

### INFANT NEWS

We would like to wish Abby a happy birthday this month! We also welcome two new friends to our class. Gavin and Jack will be joining us this month. So, please take some time to introduce yourselves to the new parents.

*MOVERS AND SHAKERS:* — Kinsey is crawling all over the place. She also has decided that she has the strength to pull herself up to her knees. Noah is sitting up on his own and pulling up to a stand-

ing position. Ava is officially a walker — she is all over the place!

### TODDLER NEWS

*TRANSITION TIME* — Its transition time in the toddler program! Our infants are starting to move over and we're having a blast. Nolan has transitioned himself, Alyssa is having a great time during her visits, and Grace is shaking the gate to come over. We are reminding our older friends to use gentle touches with each other and practicing taking turns with toys.

*THANK YOU* — Thank you to all of our parents who brought in Q-tips, stickers and crepe paper. We are using it for our art

projects.

Lastly thank you to Kid Ease, and Phil Wyels for our new storage shed and bikes.



## Kid Ease Parent Board

### SILENT AUCTION COMMITTEE

March is officially "garage sale month" per the committee. We need baskets (especially big ones). Last year, parents purchased nearly 30 baskets at garage sales for around \$15 (total). So, grab your cup of java and hit the streets this weekend for basket bargains :-). Again, thank you to our silent auction committee for all of your planning and hard work!

### CONTRACT RENEWAL COMMITTEE

The committee continues to work with DT administration during the two-month contract extension to negotiate and finalize the details of the new contract. If you have any questions, please contact Marshalle

Graham at 916-341-6270 or [mgraham@ciwmb.ca.gov](mailto:mgraham@ciwmb.ca.gov).

### KID EASE MEET & GREET

Our annual "Meet & Greet" is scheduled for March 22, 2006 at 6:00 p.m. at DT. We will take this opportunity to introduce newly elected Board members, review our roles, discuss parent participation options, provide an update on activities and address any questions.

Kid Ease will provide pizza and drinks for the parents, children and teachers. Our wonderful teachers have volunteered to care for our children. So, please be prepared to contribute to the fund to compensate them for their time. We will be collecting donations during the

meeting. Otherwise, keep an eye out for the sign-up sheet in the next week (which helps to know how much pizza to purchase and how many teachers are needed).

### BOARD MEETING

The next Board meeting will be held March 9, 2006, at 11:30 a.m. in Training Rm. 2 E&W (CalEPA building). If you are not a CalEPA employee, please check-in at the security desk. The meeting agenda will be provided the 1st week of February via the Google Group e-mail list. Additionally, the agenda and February's meeting minutes will be posted on the bulletin board to the left of the sign-in binders.