



Discovery Tree (DT) Monthly February 2006

Director's Corner

REMINDER

The following are a few items with which we need your help to ensure that the program runs optimally. Thank you in advance for your assistance and cooperation.

- We do have children with nut allergies and ask that you do not bring in foods from outside the school unless you have talked with me, Laurie A., or Julie. In the event that you do plan to bring in food items, please also remember to include in a list of the ingredients so that we are able to double check and make sure that it is safe for all children.
- Please make sure that you sign your children in and out on both sign in sheets. Signing your children in and out is a State licensing requirement.
- Parents that are in the Infant program, please remember that many of you have similar if not the same bottles. Please remember to label all of your child's bottles with their name.



The food also needs to be labeled.



- Lastly, if you would like to have a receipt after each payment please write it on a piece of paper and place it in the Director's box.

LEARNING OR PLAYING?

This month our tour through the Preschool program takes us to the Science and Sensorial Center to gain greater understanding our how our children learn through play here at Discovery Tree School.



In order for children to understand their world, they must have opportunities to explore, question and then actively construct their own knowledge. When children pour water into containers, they learn to estimate quantity. When children investigate smelling jars, they learn to use their sense of smell in new ways.

A good science center has a:

- * Balance
- * Magnet wand
- * Sensory table or tubs
- * Nonbreakable magnifying glasses
- * Sand and water equipment (sand wheel, sieves containers, scoops, and measuring cups)
- * Games (nature lotto, texture dominos, feely boxes)



- Discovery items (seashells, bird's nests, ant farm, prisms)

The Science and Sensorial center also promotes:

- *Social development* — Working beside each other at the sensory table encourages social interactions and gaining an understanding of why events happen the way that they do.
- *Emotional development* — Learning appropriate way to relieve tension.
- *Physical development* — Pouring and measuring develops eye-hand coordination.
- *Cognitive development* — Observing, exploring, measuring, comparing, classifying, predicting, discovering and learning general knowledge concepts such as round, triangular, big and small.
- *Language development* — Enhancing curiosity of children and recognizing similarities and differences.

If you have any questions about this component of the program or any others for that matter, just let me know.

Thanks,
~Becca

Important Dates:

Tuition Due	1st
Share Days	1st, 8th, 15th & 22nd
Kid Ease Board Mtg.	9th 11:30 a.m.
Tuition is Late	10th
DT Closed (President's Days)	13th & 20th
Piano Man	17th
Wear Purple to School Day	24th
Gymnastics	27th

Learning Themes

The shape of the month is a heart.



The color of the month is purple.

Our learning themes for the month are:

- ☉ Head to Toe; and
- ☉ Me, Myself and I.

Preschool News

LEARNING THEMES

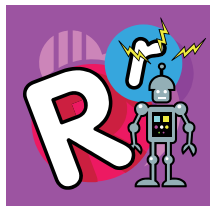
This month the themes are *Head to Toe* and *Me, Myself & I*. We will be talking with the children about nutrition and body awareness as well as helping them to learn about character building skills, emotions and social skills. The color of the month is *Purple* and the shape is *Heart*.

LETTER LEARNING

We will also be covering the following letters this month R U C O. We would like to thank all of the parents for all of the support and help that you have all

given with our letters of the week and cooking activities that we have done. We will be sending out prep bags for your child's small group. If you would like to help a teacher out you could earn credit for participation hours.

FIELD TRIPS



Infant and Toddler News

INFANT NEWS

We would like to wish Nolan and Kinsey Happy Birthday this month!!!



MOVERS AND SHAKERS: — Our babies have been very busy. Nolan and Grace are walking. Ava, Abby and Alyssa are standing alone. Kinsey is

sitting upon her own as well as scooting backwards to get where she wants to go. Sammy is crawling on his hands and knees and Noah is scooting everywhere. He has even mastered how to scoot like a crab.

TODDLER NEWS

DRAMATIC PLAY — Our toddlers have been using the dramatic play area of the room recently. It has been exciting to watch their imaginations blossom. They are really enjoying cooking and serving pretend food and caring for

babies with the dolls and blankets.

NEW FRIENDS — We're looking forward to welcoming the next round of infants that will transition soon; it's been quiet since Ben and Jax went to preschool.



Kid Ease Parent Board

PLAYGROUND GRAND OPENING

Kid Ease held the playground Grand Opening on January 24th to recognize and thank our playground sponsors. Invitees included CalEPA executives, CIWMB Board members in particular, Thomas Properties, representatives from DPA, the City of Sacramento and the project contractors, past and present Kid Ease Board members, and DT staff. Kid Ease especially recognized the extraordinary commitment, time and effort of Phil Wyels, the Barry's and Becca to make our playground dream a reality.

The event was very successful and ended nicely with CIWMB Board Member, Rosalie Mulé, cutting the ceremonial ribbon, officially dedicating our playground!

We plan on hosting another grand opening for current and past parents and children this spring. This will give us an opportunity to celebrate our accomplishment in good weather and actually play on the equipment. We will update you as details develop.

SILENT AUCTION COMMITTEE

The silent auction committee has been busy collecting donations early this year. There is a donation box to the left of the sign-in binders. Special thanks to those families that have already donated many fine items. Collecting throughout the year has proved to be a great strategy. The committee has also been extremely successful in soliciting post holiday donations from local businesses. Super thanks to our silent auction committee for all of their planning and hard work!

CONTRACT RENEWAL COMMITTEE

The committee is working with DT administration to extend the current contract for a couple of months, while the details of the new contract are negotiated and finalized.

PARENT PARTICIPATION

Please complete a participation ticket and/or e-mail Beth Stern at Beth.Stern@csc.ca.gov to report your parent participation activities. These include field trips, donations, working at the book fair, selling See's candy, serving on a committee, attending Board meetings,

etc. If you have questions about opportunities, please contact Beth.

MARCH MEET & GREET

Details on the upcoming Kid Ease annual meeting are coming! We hold a "Meet & Greet" each March to introduce newly elected members of the Board, review roles, discuss parent participation options, provide an update on activities and address any questions. Details will be posted in the next couple of weeks regarding the date, time and agenda.

BOARD MEETING

The next Board meeting will be held February 9, 2006, at 11:30 a.m. in Training Rm. 2 E&W (CalEPA building). If you are not a CalEPA employee, please check-in at the security desk. The meeting agenda will be provided the 1st week of February via the Google Group e-mail list. Additionally, the agenda and January's meeting minutes will be posted on the bulletin board to the left of the sign-in binders.